

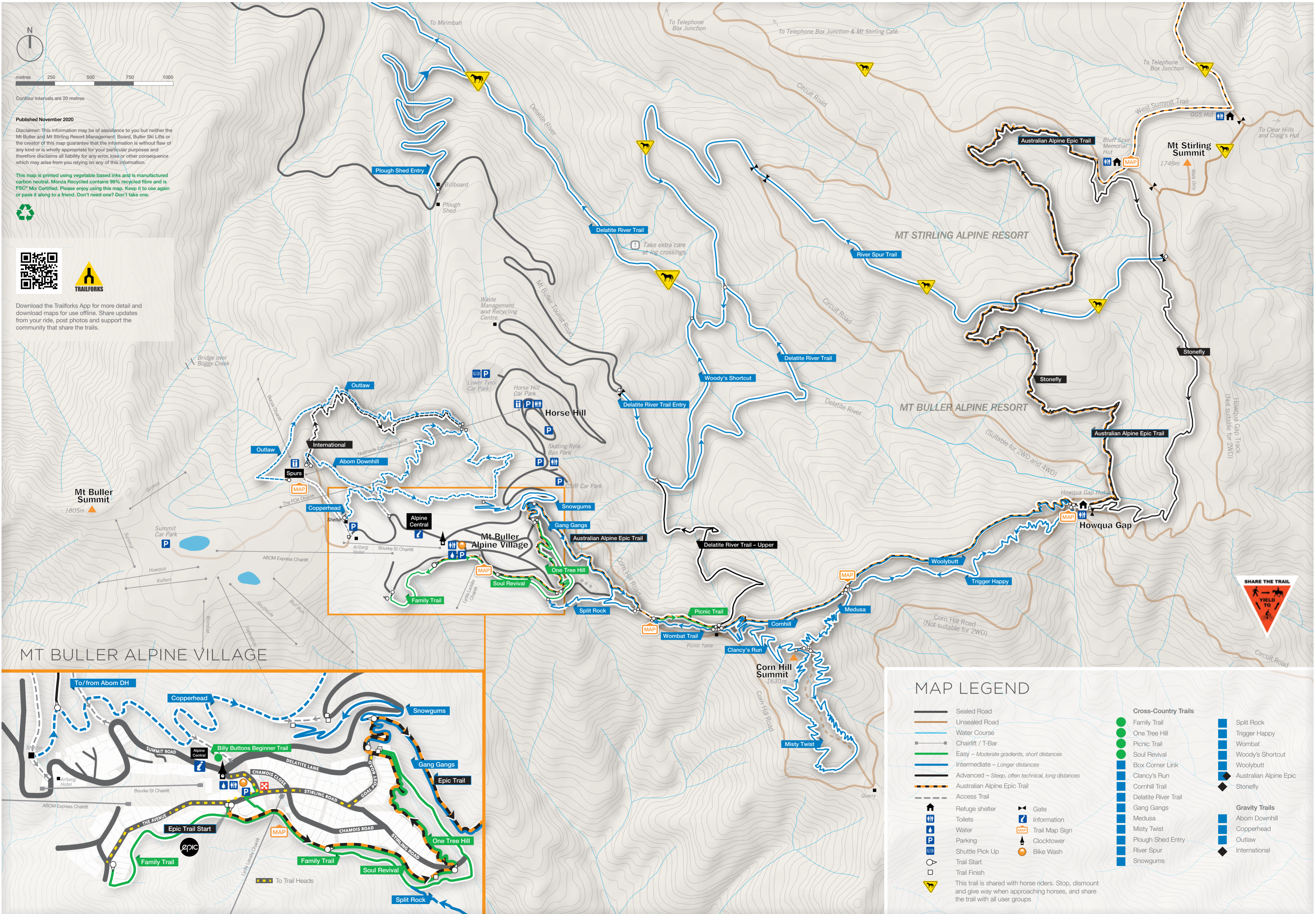
Published November 2020

Disclaimer: This information may be of assistance to you but neither the Mt Buller and Mt Stirling Resort Management Board, Buller Ski Lifts or the creator of this map guarantee that the information is without flaw of any kind or is wholly appropriate for your particular purposes and therefore disclaims all liability for any error, loss or other consequence which may arise from you relying on any of this information.

This map is printed using vegetable based inks and is manufactured carbon neutral. Morza Recycled contains 99% recycled fibre and is FSC® Mix Certified. Please enjoy using this map. Keep it to use again or pass it along to a friend. Don't need one? Don't take one.



Download the Trailforks App for more detail and download maps for use offline. Share updates from your ride, post photos and support the community that share the trails.



MT BULLER ALPINE VILLAGE



MAP LEGEND

- | | | | | | |
|--|---|--|----------------------|--|------------------------|
| | Sealed Road | | Family Trail | | Split Rock |
| | Unsealed Road | | One Tree Hill | | Trigger Happy |
| | Water Course | | Picnic Trail | | Wombat |
| | Chairlift / T-Bar | | Soul Revival | | Woody's Shortcut |
| | Easy - Moderate gradients, short distances | | Box Corner Link | | Woolybutt |
| | Intermediate - Longer distances | | Clancy's Run | | Australian Alpine Epic |
| | Advanced - Steep, often technical, long distances | | Cornhill Trail | | Stoneyly |
| | Australian Alpine Epic Trail | | Delatite River Trail | | Gravity Trails |
| | Access Trail | | Gang Gangs | | Abom Downhill |
| | Refuge shelter | | Medusa | | Copperhead |
| | Toilets | | Misty Twist | | Outlaw |
| | Water | | Plough Shed Entry | | International |
| | Parking | | River Spur | | |
| | Shuttle Pick Up | | Snowgums | | |
| | Trail Start | | | | |
| | Trail Finish | | | | |
| | This trail is shared with horse riders. Stop, dismount and give way when approaching horses, and share the trail with all user groups | | | | |

